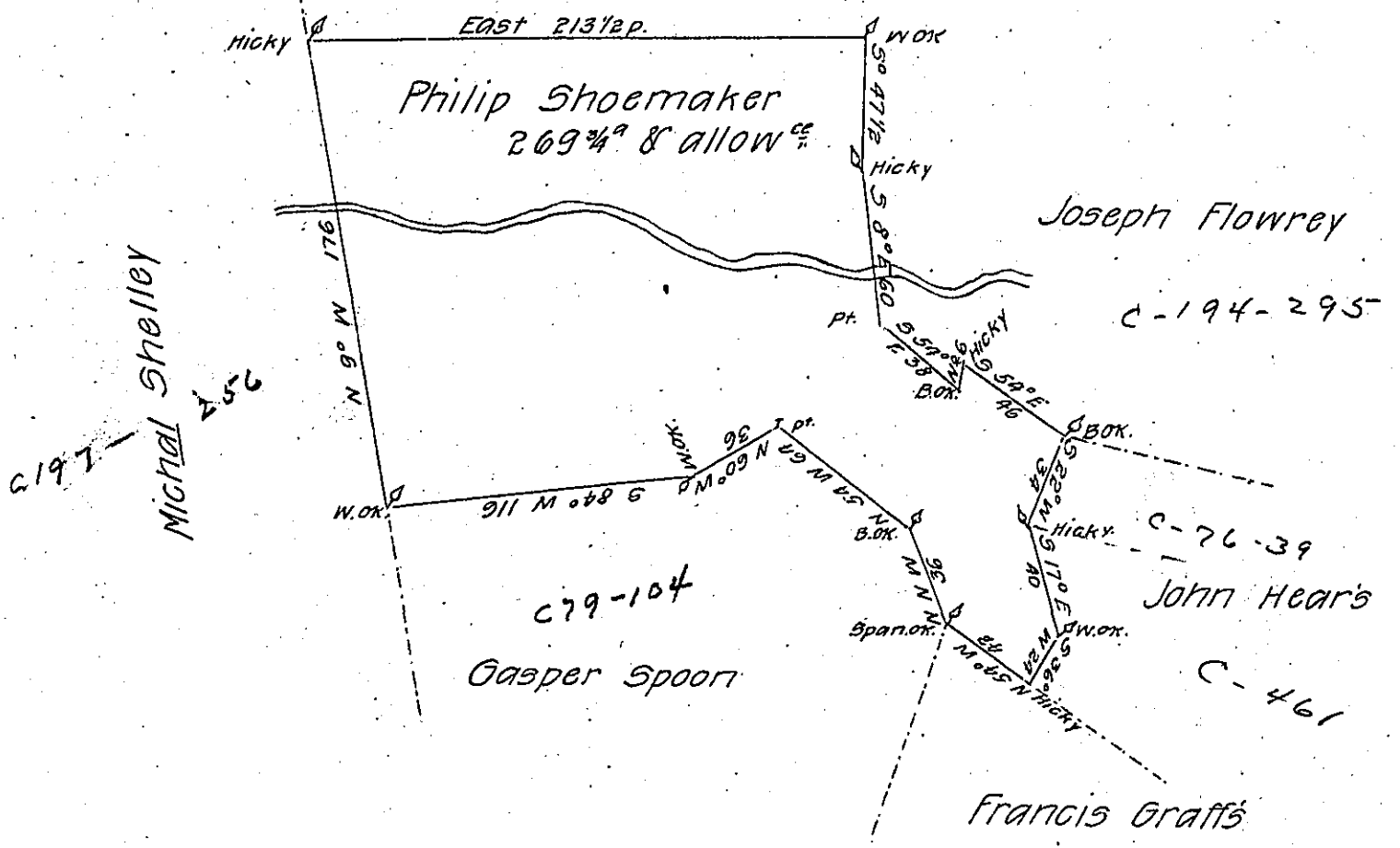


D-40-271
Shoemakers other land



Survey'd to Philip Shoemaker on the 12th December 1765 the
 above discribed tract of two hundred sixty nine acres & three
 quarters & the usuall allowance of six P Ct. Situate in Rapho
 town^e. Lancaster County By Applicatⁿ of the tenth day of October
 1765. No 1048

P-Bartrem Galbraith

To Jno. Lukens Esqr.

D.S.

Surve^r Generall

IN TESTIMONY that the above is a copy of the original remaining on file in
 the Department of Internal Affairs of Pennsylvania, made
 conformably to an Act of Assembly approved the 16th day of
 February, 1833, I have hereunto set my Hand and caused
 the Seal of said Department to be affixed at Harrisburg,
 this sixteenth day of November 1906.

Leas R. Brown
 Secretary of Internal Affairs.